



Y-TYPE FABRICATED STRAINERS

PN 10, PN 16 & PN 20 (Class 150)
DN 250 – 600 (10" - 24")

Carbon Steel

Fig. FS310/316/315

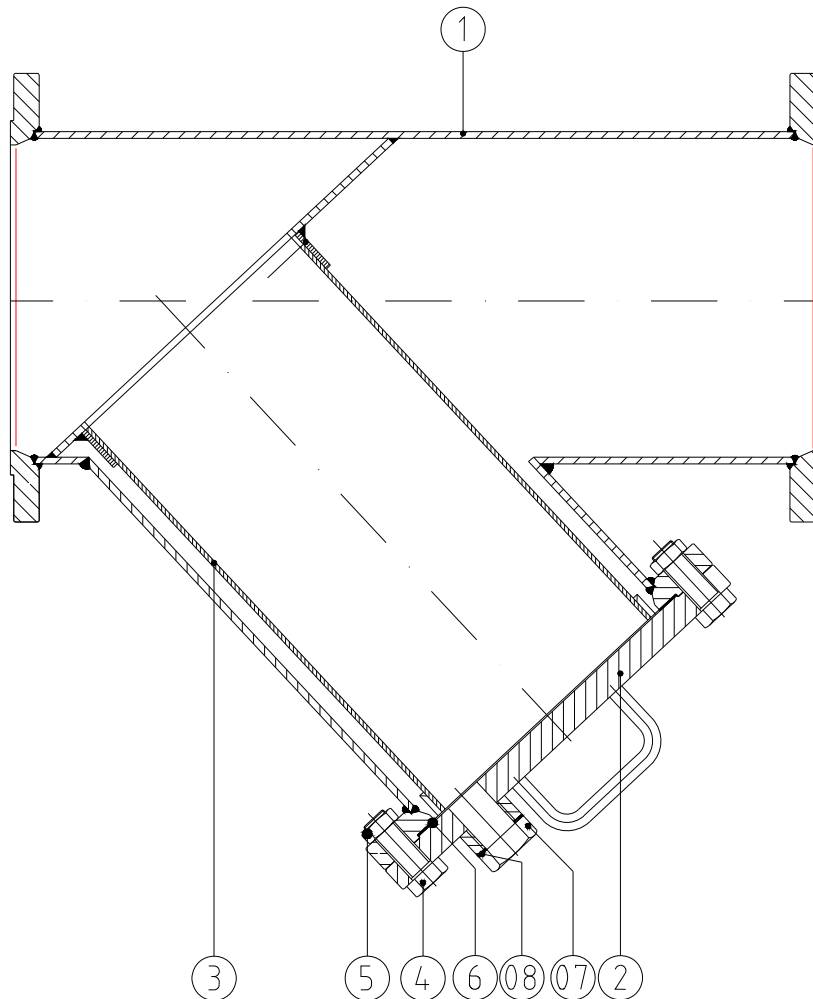
Stainless Steel

Fig. FS410/416/415





Parts and materials



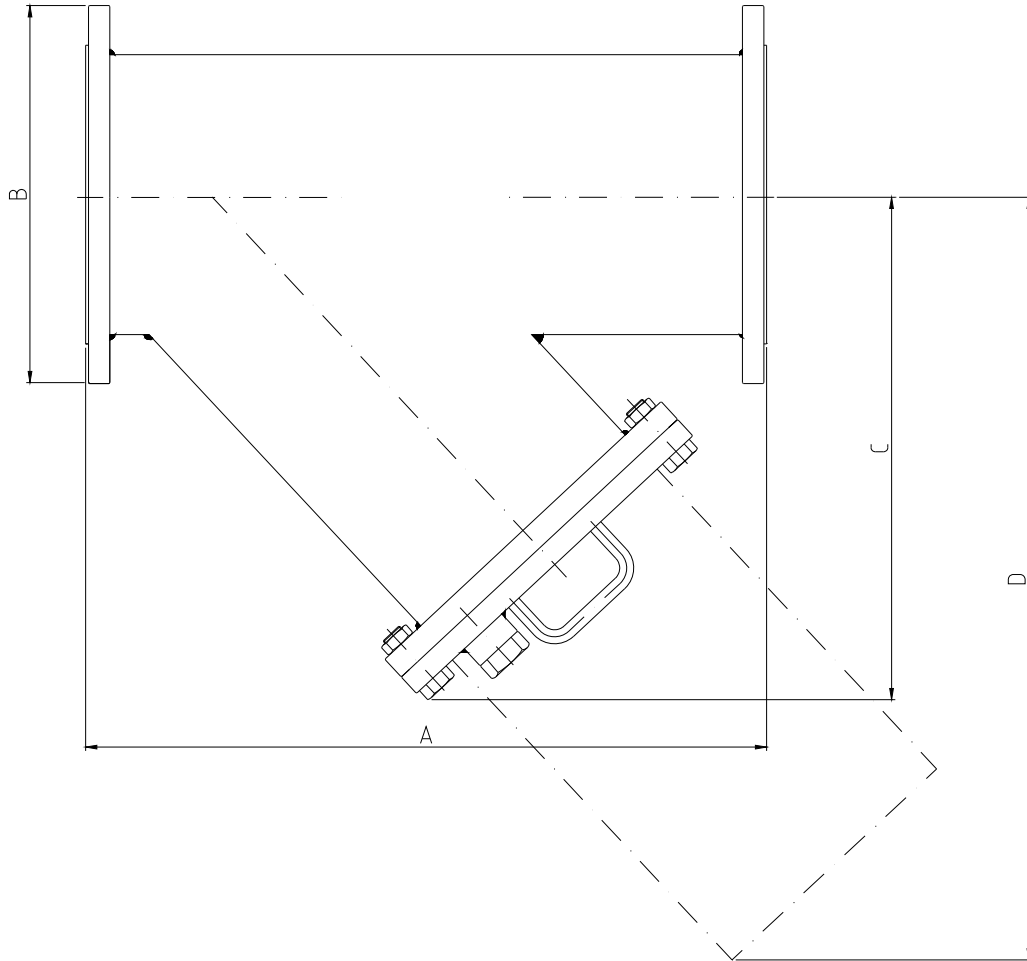
Item	Description	Carbon Steel	Stanleis Steel
1	Body	1.0570 (ST 52.3)	1.4401 (AISI 316)
2	Cap	1.0421 (ST.52)	1.4401 (AISI 316)
3	Strainer screen	1.4301 (AISI 304)	
4	Bolt	8.8	A2
5	Nut	8	A2
6	Cap Gasket	Syntethic Fiber	PTFE
7	Drain plug	1.0401 (C15)	1.4401 (AISI 316)
8	Drain plug gasket	Synthetic fiber	PTFE

AJ VALVELINE. S.L.
 e-mail: ajvalveline@ajvalveline.com
www.ajvalveline.com



®

General Dimensions



SIZE	A	ØB			C	D	Weight		
		PN 10	PN 16	PN 20 (Class 150)			PN 10	PN 16	PN 20 (Class 150)
250 (10")	730	395	405	406.4	530	920	130	190	192
300 (12")	850	445	460	482.5	630	1020	190	240	243
350 (14")	980	505	520	533.4	770	1200	250	340	342
400 (16")	1100	565	580	596.9	830	1350	330	400	403
450 (18")	1200	615	640	635	920	1500	450	490	492
500 (20")	1250	670	715	698.5	1000	1650	520	550	553
600 (24")	1450	780	840	812.8	1250	1800	670	700	702

(*) Dimensions in mm and weight in Kg.

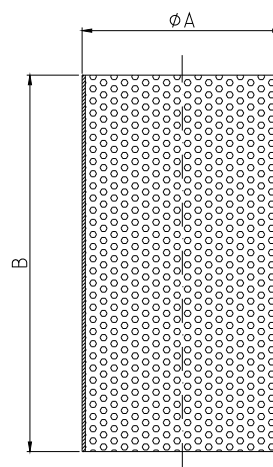
AJ VALVELINE. S.L.
 e-mail: ajvalveline@ajvalveline.com
www.ajvalveline.com

General Characteristics

GENERAL CHARACTERISTICS	Fig. FS310, FS316, FS315 & FS410, FS416, FS415	
DESIGN STANDARDS		
Strainer design	AD Merkblatt TRD 301	
Face to face Dimensions	EN 558-1 SERIES 1	
Flanged Dimensions	EN 1092-1 & ASME B16.5 Class 150	
Visual Inspection	MSS SP-55	
Marking	EN 19	
TESTS AND CERTIFICATES		
Pressure testing	EN 12266-1 P10	

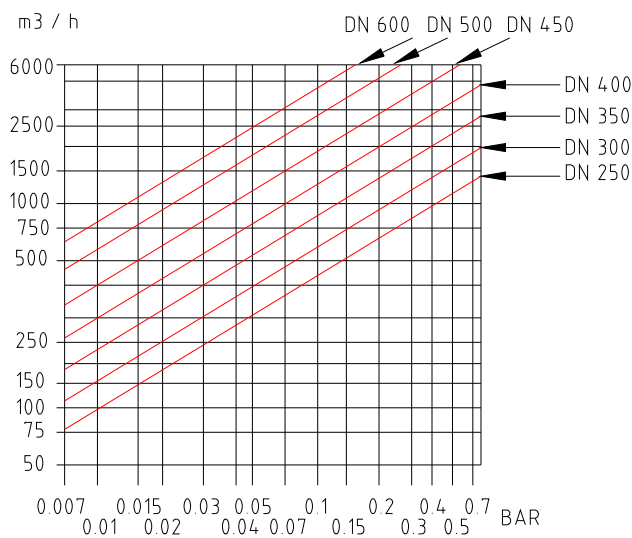
Strainer Screen Dimensions:

DN	øA	B	Perforation	Area
250	250	475	ø1,5	1: 1,71
300	300	585	ø1,5	1: 1,76
350	350	695	ø1,5	1: 1,79
400	400	805	ø1,5	1: 1,81
450	450	855	ø1,5	1: 1,71
500	500	895	ø1,5	1: 1,61
600	600	1000	ø1,5	1: 1,50



(*) Dimensions in mm

Pressure drop:



Pressure / Temperature:

